



link
international

YOUR BUSINESS, OUR CARE



LINK INTERNATIONAL was founded in 2007 as consultancy company for services of **project management** and **expediting** for foreign companies. In the last years we took several different business opportunities and so our company's structure developed and grew up with new resources.

Today the activities of Link International are divided in 4 different but synergic business units: EXPEDITING AND PROJECT MANAGEMENT, DISTRIBUTING EAGLE BURGMANN MECHANICAL SEALS (Norther African Countries and Middle Eastern Countries), REVAMPING AND MAINTENANCE OF GEARBOXES (for Steel Plants), SUPPLY OF SPARE PARTS (for Steel Plants).

Our know-how comes from our experience in well known Italian gearbox manufacturing companies, both in operations and engineering.

We are now for our customers a precious partner for solving their problems related to maintenance and spare parts. We can in fact find solutions and despatch in a very short time the products you need, all over the world.



Expediting & Project Management Services



**Mechanical Seals
DIN/API**



Revamping and Re-engineering



Spare Parts



Mechanical Seals:

We supply mechanical seals (liquid-gas) both to plant managers and end-users.

Specifically, we can quickly supply any type of **mechanical seal**, **liquid-sealing systems**, **textile compensators** (both rubber and metallic), sealing systems for compressors and air blowers, **static seals** and **magnetic dragging systems**.

Our sales distributing network enables us to serve in a very quick way all North African Countries and Middle East, as well as the rest of the world. We can rely on our close commercial relationship with all the major manufacturers where we can procure all the spares from stock.

We can also supply alternative solutions starting from other manufacturers' products, always providing very high quality standards and "taylor-made" service.



The business unit related to mechanical seals supplies product in the following industrial sectors:

- ✓ [Steelplants](#)
- ✓ Petro-chemical industry
- ✓ Fluid transport systems
- ✓ [Water treatment plants](#)
- ✓ Desalting plants
- ✓ Plants for the treatment of muds coming from petrol reservoirs
- ✓ [Mining plants](#)
- ✓ [Water power plants](#)
- ✓ On-shore and off-shore water pumping
- ✓ Waste disposalplants
- ✓ Cooling systems
- ✓ [Gas power plants](#)
- ✓ Paper feed and extraction plants



REVAMPING of GEARBOXES

Our experience in mechanical transmission engineering for heavy industrial applications enables our company to offer a revamping and maintenance service to our clients for their gearboxes and couplings.

Link International engineers, draws, manufactures and repairs every kind of gearbox and mechanical transmission for industrial application. This service is tailor made for each client.

Through the **reverse engineering** we can redraw the original gearbox with all its components and define the original performances. In this way we can immediately give to our customer a technical feedback in case of damage, excessive wear of rotating parts or excessive loudness.



REVAMPING



By maintaining the same external size of the gearbox we can suggest to the customer:

- ✓ to replace one or more parts (gears, bearings, seals, filters)
- ✓ to repair or re-grind the gears
- ✓ to increase gearbox performances through the recalculation of gearbox power and life time

The most up-to date technologies in the world of mechanics enables us to improve significantly the performances of a gearbox by using **higher quality alloy steels**, modern heat treatments and **high grade surface finishing** to have better resistance to wearing of gearwheels and at the same time reduce the loudness.

The advantage of the revamping is that our customer can decide “before” wether to upgrade its gearbox or repair it or to have a completely new one.

REVAMPING

HOW WE DO IT:

- ✓ Check of the gearbox at customers plant, collection of datas
- ✓ Check of internal/external sizes finalised to reverse engineering
- ✓ **3D** Autodesk Engineering, **F.E.A. (Finite Element Analysis)**, cross check of gearing performance with KissSoft software
- ✓ Calculation of costs for repair and replacement
- ✓ Quality controls and **NDT tests**



Link International can intervene in any kind of industrial application field, especially in steelplants transmissions:

PLANETARY GEARBOXES



APPLICATIONS:

- ✓ TBM (tunnel boring machines)
- ✓ Wind turbine tower rotation
- ✓ Lifting systems offshore
- ✓ Cableways
- ✓ Agricultural transmissions

TILTING GEARBOXES



- ✓ Converter tilting drives
- ✓ Cable winding drives
- ✓ Transporter drives

PARALLEL AXES GEARBOXES



APPLICATIONS:

- ✓ Rolling mill drives(hot/cold rolling)
- ✓ Cement drives
- ✓ Pinion stand drives
- ✓ Encoder drives
- ✓ Tension levellers drives
- ✓ Shear drives
- ✓ Rubber extruders

TWIN DRIVES (PINION STAND)



- ✓ Rolling mill
- ✓ Long products mill
- ✓ Rail mills
- ✓ Profiled bars drives

BEVEL AXES GEARBOXES



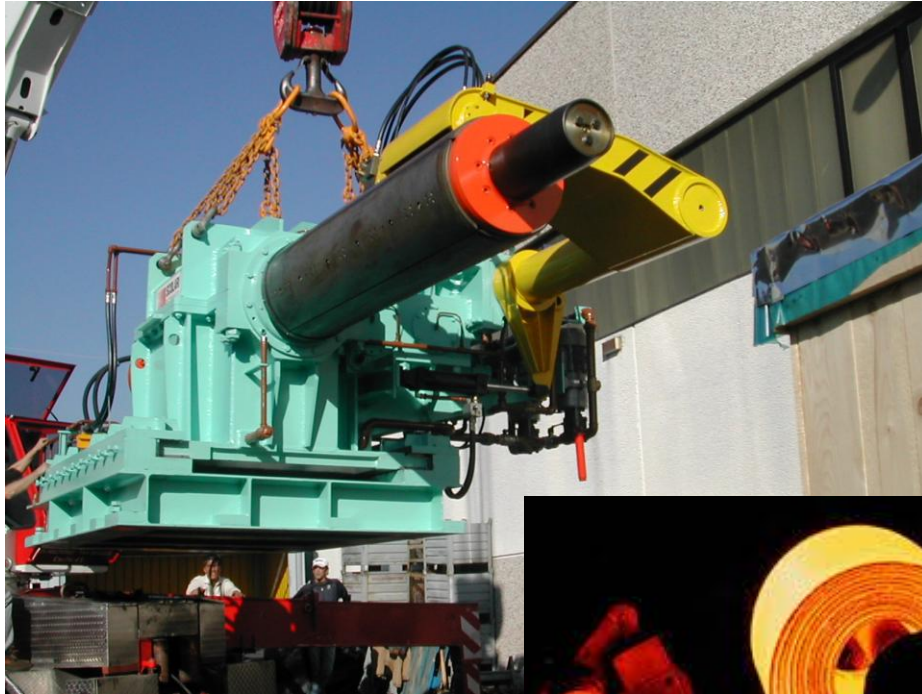
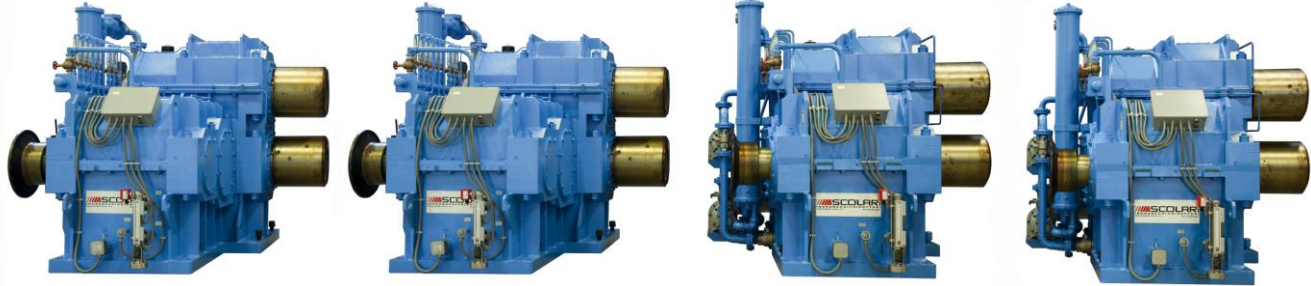
APPLICATIONS:

- ✓ Edger / roughing mills
- ✓ Continuous casting drives
- ✓ Drilling machines drives
- ✓ Seamless pipe mills drives
- ✓ Industrial air blowers
- ✓ Ring rolling mills
- ✓ Cooling towers mills

SCREWDOWN GEARBOXES



- ✓ Mechanical screwjacks
- ✓ Marble cutting machine drives
- ✓ Mixers
- ✓ Rolls fasteners drives

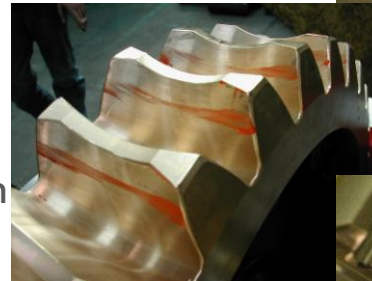




SPARE PARTS

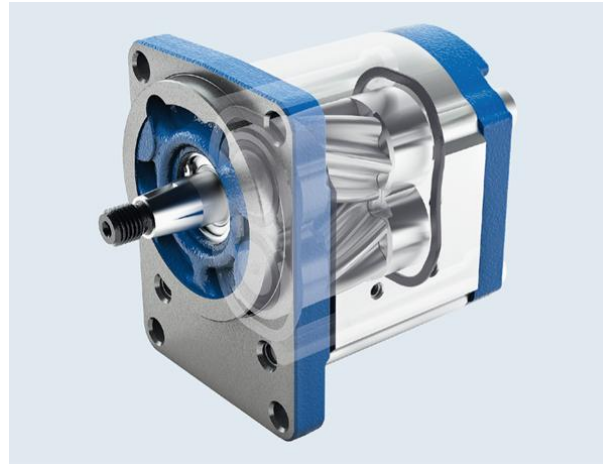
We are completing our range of services to the customer by supplying a wide range of spares of different brands:

- ✓ Cylindrical gears with straight or helical teeth
- ✓ Bevel gears (Klingelnberg or Gleason teeth)
- ✓ Sprocket gears
- ✓ Screw pairs
- ✓ Splined shafts
- ✓ Racks with straight or helical teeth
- ✓ Couplings and cardan shafts
- ✓ Chain wheels
- ✓ Screwjacks (Scolari)
- ✓ Welded gearcases



- ✓ Roller bearings and spherical roller bearings
- ✓ Spherical joints
- ✓ BS and ASA transmission chains
- ✓ Shaft seals, V-Rings, O-rings
- ✓ Flat seals
- ✓ Antivibration rings
- ✓ Expansion joints
- ✓ Knives
- ✓ Lance and burners





- ✓ Pumps
- ✓ Flowmeters
- ✓ Pressure indicators
- ✓ Pressure gauges
- ✓ Filters
- ✓ Proximity sensors



CONTACTS

Office Premises:

LINK INTERNATIONAL S.r.l.
Via Emilio Borsa, 10
20900 Monza (MB)
Italia

P.IVA e C.F: IT 05881170962
R.E.A. : 1852542

Tel. +39 039 2268758
Fax. +39 039 2267494

Web: www.linkinternational.it
Mail: info@linkinternational.it



link
international

References:

General Manager / Export sales
D.ssa Elisa Brescianini
elisa.brescianini@linkinternational.it
Phone: +39 342 1451479

Inland Sales/ Procurement
Mr. Luca Scolari
luca.scolari@linkinternational.it
Phone: +39 335 362950

Technical Dept. / Expediting
Ing. Marco Scolari
marco.scolari@linkinternational.it
Phone: +39 334 6605902

Accounting
Nicoletta Scolari
nicoletta.scolari@linkinternational.it
Phone: +39 039 2268758